

TORQUE-ARM II

ADVANCED SEALING TECHNOLOGY

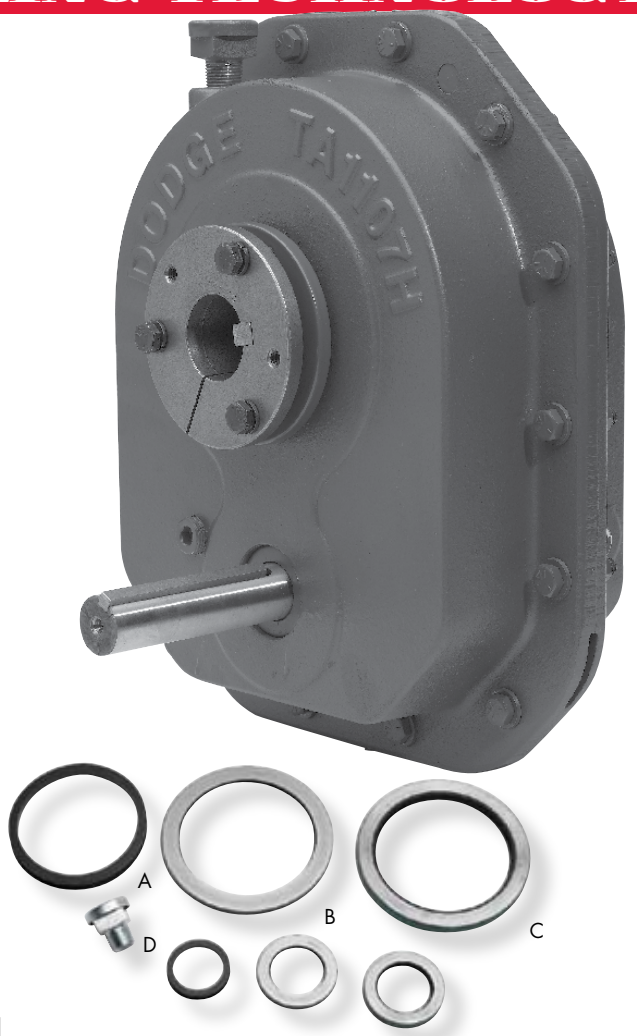
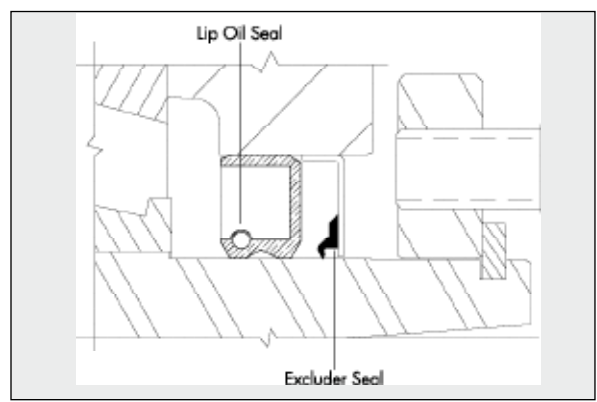
DODGE TORQUE-ARM II™ ALL NEW Heavy Duty Shaft Mounted Speed Reducers with Twin Tapered bushing mounting to the driven shaft

With 50 years of proven dependability and more than 1.5 million units in service throughout the world DODGE TORQUE-ARM II speed reducers are the standard of the industry.

Specify a DODGE TORQUE-ARM II and you get more than just power. You get a rugged, dependable product. Innovative technology. Responsive technical support and unmatched industry application expertise. When you add that all up, it's your assurance of power plus performance from a single proven source and the established leader in power transmission.

Improved Sealing Features

- New advanced heavy duty sealing system improves sealing performance with less lip pressure and a wider contact pattern than conventional lip seals
- Bi-rotational, hydrodynamic radial lip design
- Smooth molded lip
- Hydrodynamic action provides better lip lubrication and greatly reduces shaft wear
- Pumps lubricant in, seals out contaminants
- Coated seal OD to maintain tight fit in reducer
- Secondary excluder seal with contact lip
- Hydrogenated Nitrile Butadiene Rubber-HNBR



From Top Left: A) Optional V-ring Seal B) Excluder Seal C) New Oil Seal D) New Breather

Improved Sealing Benefits

- Excellent oil resistance & compatibility
- -40°F to +300°F temperature range
- Lower temperature seal operation
- Much lower shaft & seal drag
- Reduced shaft wear & grooving
- Extends seal service life up to 6 times
- Reduces entry of fewer contaminants
- Maintains fresh film of oil
- Seal compound offers improved tensile strength and resistance to heat, abrasion, hardening in hot oil, ozone and weathering
- 100% Factory tested

- ✓ Aggregate/Cement
- ✓ Food
- ✓ Mining
- ✓ Forest/Paper
- Petro/Chem
- ✓ Unit/Baggage Handling
- HVAC/Industrial Air Handling
- Environmental/Fluid Power
- Automotive
- ✓ Metals

Additional Features

- Optional v-ring flinger seal kit (includes input & output seals, see chart for part numbers)
- New breather system
- 36 / 18 month warranty
- Meets or exceeds AGMA standards

DODGE Twin Tapered Bushing System

Exclusive twin tapered bushings provide sturdy, concentric grip of the driven shaft on both sides of the reducer. This eliminates the wobble and fretting corrosion normally associated with single bushed shaft mounted reducers. These bushings are made of ductile iron for shock resistance and fully split to completely grip the driven shaft. As the bushing screws are tightened, the bushing is drawn inward and wedged evenly and firmly against the shaft. To remove, simply remove the mounting screws, insert them in the threaded holes in the bushing flange,

and turn them against the backing plate. They will act as jacking screws and pull the bushing right out. No puller is required, the reducer simply slides off.

DODGE Short Shaft Bushing System

Allows replacement of single bushed reducers with the industry preferred Twin Tapered Bushing System. Extended outboard bushing reaches in and grabs the shorter shaft.

AGMA and ABMA Rated

Anti-friction roller bearings are sized to conform to AGMA and ABMA design of 25,000 hrs average life in Class 1 applications.

Other Accessories Available

FILTER BREATHER

- 40 Micron Filter with Cap
- Combat Contaminants & Moisture

UNIVERSAL MOTOR MOUNTS

- Adjustable, One Motor Mount Per Case Size

NEW DESIGN BELT GUARDS

- Fits Flush Against Reducer In Most Applications

UNIVERSAL SCREW CONVEYOR ADAPTER

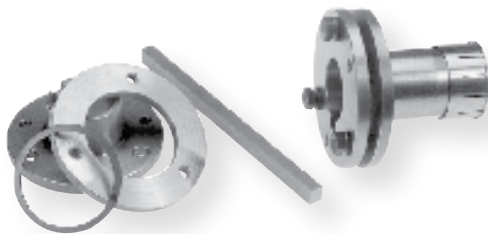
- Includes Provision For Adjustable Packing

SCREW CONVEYOR DRIVESHAFTS

- Standard 3 Hole Design, Greater Torque Capacity

NEW DESIGN BACKSTOP

- Larger Sprags, Lift Off Design
- NOW Compatible With EP Lube



DODGE TORQUE-ARM II PRODUCT LINE

Tapered Bushed Reducer	Maximum Bore with Standard Bushing"	AGMA Code	Mech Input HP at 40 rpm Output, 40:1	Mech Input HP at 75 rpm Output, 15:1 & 25:1	Mech Input HP at 100 rpm Output, 5:1	Tapered Bushing available	Short Shaft Bushing available	V-ring Seal Kit Part Numbers	Motor Mount available	Backstop available
TA0107L	1 7/16"	107	2.42	4.27	5.51	YES	YES	900249	YES	YES
TA1107H	1 1/2"	107	4.39	7.73	9.84	YES	YES	901249	YES	YES
TA2115H	2 3/16"	115	7.57	12.72	11.76	YES	YES	902249	YES	YES
TA3203H	2 3/8"	203	11.72	19.81	19.61	YES	YES	903249	YES	YES
TA4207H	2 11/16"	207	18.00	30.78	22.62	YES	YES	904249	YES	YES
TA5215H	3 3/16"	215	30.40	53.90	53.29	YES	YES	905249	YES	YES
TA6307H	3 7/16"	307	41.00	72.63	74.34	YES	YES	906249	YES	YES
TA7315H	4 7/16"	315	61.30	108.53	94.41	YES	YES	907249	YES	YES
TA8407H	4 7/16"	407	87.50	155.00		YES	YES	907249	YES	YES
TA9415H	4 15/16"	415	123.70	218.86		YES	YES	909249	YES	YES
TA10507H	6"	507	169.70	274.85		YES	YES	910249	YES	YES
TA12608H	7"	608	228.50	418.76		YES	YES	912249	YES	YES

www.baldor.com www.ptplace.com www.dodge-pt.com www.reliance.com



Baldor Electric Company Headquarters

P.O. Box 2400, Fort Smith, AR 72902-2400 U.S.A., Ph: (1) 479.648.5792, Fax (1) 479.648.5792, International Fax (1) 479.648.5895

DODGE/Reliance Division

6040 Ponders Court, Greenville, SC 29615-4617 U.S.A., Ph: (1) 864.297.4800, FAX: (1) 864.281.2433

RAPS-1611-1 4/07-5M-K Copyright © 2007 Baldor Electric Company All Rights Reserved. Printed in USA.

This material is not intended to provide operational instructions. Appropriate instruction manuals and precautions should be studied prior to installation, operation or maintenance of equipment.