

# QUANTIS PART NUMBERS



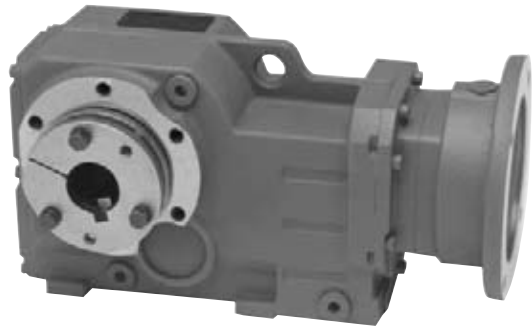
## QUANTIS Part Number Nomenclature

**RHB Example: B3C14S000565**

<b>B</b>	<b>3</b>	<b>C</b>	<b>14</b>	<b>S</b>	<b>00565</b>
<b>Housing Configuration</b>	<b>Size</b>	<b>Input Type</b>	<b>Frame</b>	<b>Output Type</b>	<b>Ratio</b>
H = ILH Foot Mounted B = RHB Foot Mounted BF = RHB Flange Mounted M = MSM Universal Mounting	3 = 38 4 = 48 6 = 68 8 = 88 10 = 108 12 = 128 14 = 148 16 = 168	C = Clamp Collar L = 3pc Coupled	56 = 56C 14 = 140TC 18 = 180TC 21 = 210TC 25 = 250TC 28 = 280TC	S = Solid Inch Shaft (RHB - A side) T = Tapered Hollow	000.00

### RHB Reducer Specifications:

- Size 38 - 168
- NEMA Clamp Collar and 3 Pc Coupled Inputs
- Foot and Flange Mounted Housing Configurations
- Standard Inch Output Shafts (A-Side)
- Tapered Hollow Bores With Twin-Tapered Bushings
- Nitrile Input and Output Lip Seals
- A1 Mounting
- Mobilgear 600 XP 220



## RHB Footed Housing Stock Part Numbers BB HOUSING - STOCK

Ratio	Size	Exact Ratio	Part Number	Output RPM	Output Torque (in-lb)	Output OHL (lbf)	Mechanical Input HP (Max)			
							56C	140TC	180TC	210TC
5:1	BB 383	5.65	<b>B3C56S00565</b>	310	411	589	2.02			
	BB 383	5.65	<b>B3C14S00565</b>	310	1019	589		5.00		
	BB 383	5.65	<b>B3C18S00565</b>	310	1140	589			5.60	
	BB 483	7.22	<b>B4C18S00722</b>	242	2573	1032			9.90	
	BB 683	6.44	<b>B6C18S00644</b>	272	2404	2503			10.36	
	BB 883	5.54	<b>B8C21S00554</b>	316	5377	4505				26.94
15:1	BB 383	15.91	<b>B3C56S01591</b>	110	1157	617	2.02			
	BB 383	17.99	<b>B3C14S01799</b>	97	2213	726		3.41		
	BB 483	15.42	<b>B4C18S01542</b>	113	3985	1110			7.17	
	BB 883	14.04	<b>B8C21S01404</b>	125	12592	4512				24.90
30:1	BB 383	31.59	<b>B3C56S03159</b>	55	2213	926	1.94			
	BB 483	28.90	<b>B4C14S02890</b>	61	3985	1226		3.83		
	BB 683	39.39	<b>B6C14S03939</b>	44	7101	2503		5.01		
	BB 683	27.99	<b>B6C18S02799</b>	63	7262	2503			7.20	
	BB 883	28.50	<b>B8C21S02850</b>	61	14612	4512				14.24
50:1	BB 483	54.49	<b>B4C56S05449</b>	32	3964	1591	2.02			
	BB 483	60.08	<b>B4C14S06008</b>	29	3985	1591		1.84		
	BB 683	58.23	<b>B6C14S05823</b>	30	7262	2503		3.46		
	BB 883	58.37	<b>B8C18S05837</b>	30	14612	4512			6.95	
75:1	BB 483	83.25	<b>B4C56S08325</b>	21	3985	1878	1.33			
	BB 683	83.40	<b>B6C14S08340</b>	21	7262	2503		2.42		
	BB 883	84.21	<b>B8C14S08421</b>	21	14612	4512		4.82		
	BB 883	75.45	<b>B8C18S07545</b>	23	14612	4512			5.38	
	BB 883	84.21	<b>B8C18S08421</b>	21	14612	4512			4.82	
100:1	BB 683	99.55	<b>B6C56S09955</b>	18	7046	2503	1.97			
	BB 883	103.38	<b>B8C14S10338</b>	17	14612	4512		3.92		
150:1	BB 683	150.98	<b>B6C56S15098</b>	12	7262	2503	1.34			
	BB 883	120.42	<b>B8C14S12042</b>	15	14612	4512		3.37		
	BB 883	144.58	<b>B8C14S14458</b>	12	14612	4512		2.81		
200:1	BB 883	193.24	<b>B8C56S19324</b>	9	10992	4512	1.58			
250:1	BB 683	243.72	<b>B6C56S24372</b>	7	7262	2503	0.83			
	BB 883	302.68	<b>B8C56S30268</b>	6	11638	4512	1.07			

Stock

**Notes:** Footed, standard inch shaft diameter, A-side shaft, A1 mounting position, clamp collar input, 1750 rpm input speed

NOMENCLATURE PAGE RHB-5	SELECTION GEARMOTOR PAGE RHB-63	DIMENSIONS PAGE RHB-90	THERMAL RATINGS PAGE RHB-364
----------------------------	------------------------------------	---------------------------	---------------------------------

## RHB Flanged Housing Stock Part Numbers BF HOUSING - STOCK

Ratio	Size	Exact Ratio	Part Number	Output RPM	Output Torque (in-lb)	Output OHL (lbf)	Mechanical Input HP (Max)			
							56C	140TC	180TC	210TC
							56C	140TC	180TC	210TC
5:1	BF 383	5.65	<b>BF3C56T00565</b>	310	411	589	2.02			
	BF 383	5.65	<b>BF3C14T00565</b>	310	1019	589		5.00		
	BF 383	5.65	<b>BF3C18T00565</b>	310	1140	589			5.60	
	BF 483	7.22	<b>BF4C18T00722</b>	242	2573	1032			9.90	
	BF 683	6.44	<b>BF6C18T00644</b>	272	2404	2503			10.36	
	BF 883	5.54	<b>BF8C21T00554</b>	316	5377	4505				26.94
10:1	BF 483	10.15	<b>BF4L14T01015*</b>	172	1825	1032		4.99		
12:1	BF 483	11.95	<b>BF4C14T01195</b>	146	2155	1110		5.01		
15:1	BF 383	15.91	<b>BF3C56T01591</b>	110	1157	617	2.02			
	BF 383	17.99	<b>BF3C14T01799</b>	63	2213	726		3.41		
	BF 483	16.79	<b>BF4L14T01679*</b>	104	3019	1110		4.99		
	BF 483	15.42	<b>BF4C18T01542</b>	113	3985	1110			7.17	
	BF 883	14.04	<b>BF8C21T01404</b>	125	12592	4512				24.90
20:1	BF 483	22.54	<b>BF4C14T02254</b>	78	3540	1149		4.36		
30:1	BF 383	31.59	<b>BF3C56T03159</b>	55	2213	926	1.94			
	BF 483	28.90	<b>BF4C14T02890</b>	61	3985	1226		3.83		
	BF 683	39.39	<b>BF6C14T03939</b>	44	7101	2503		5.01		
	BF 683	39.39	<b>BF6L14T03939*</b>	44	7101	2503		5.01		
	BF 683	27.99	<b>BF6C18T02799</b>	63	7262	2503			7.20	
	BF 883	28.50	<b>BF8C21T02850</b>	61	14612	4512				14.24
40:1	BF 483	40.60	<b>BF4L14T04060*</b>	43	3985	1226		2.73		
50:1	BF 483	54.49	<b>BF4C56T05449</b>	32	3964	1591	2.02			
	BF 483	60.08	<b>BF4C14T06008</b>	29	3985	1591		1.84		
	BF 683	58.23	<b>BF6C14T05823</b>	30	7262	2503		3.46		
	BF 883	58.37	<b>BF8C18T05837</b>	30	14612	4512			6.95	
75:1	BF 483	83.25	<b>BF4C56T08325</b>	21	3985	1878	1.33			
	BF 483	75.45	<b>BF4L14T07545*</b>	23	3985	1878		1.47		
	BF 683	83.40	<b>BF6C14T08340</b>	21	7262	2503		2.42		
	BF 883	84.21	<b>BF8C14T08421</b>	21	14612	4512		4.82		
	BF 883	75.45	<b>BF8C18T07545</b>	23	14612	4512			5.38	
	BF 883	84.21	<b>BF8C18T08421</b>	21	14612	4512			4.82	
100:1	BF 683	99.55	<b>BF6C56T09955</b>	18	7046	2503	1.97			
	BF 883	103.38	<b>BF8C14T10338</b>	17	14612	4512		3.92		
150:1	BF 683	150.98	<b>BF6C56T15098</b>	12	7262	2503	1.34			
	BF 883	120.42	<b>BF8C14T12042</b>	15	14612	4512		3.37		
	BF 883	144.58	<b>BF8C14T14458</b>	12	14612	4512		2.81		
200:1	BF 883	193.24	<b>BF8C56T19324</b>	9	10992	4512	1.58			
250:1	BF 683	243.72	<b>BF6C56T24372</b>	7	7262	2503	0.83			
	BF 883	246.13	<b>BF8C56T24613</b>	7	11368	4512	1.28			
	BF 883	302.68	<b>BF8C56T30268</b>	6	11638	4512	1.07			

Stock

**Notes:** Twin Tapered hollow output bore, A1 mounting position, clamp collar input, 1750 rpm input speed  
 \*Twin Tapered hollow output bore, A1 mounting position, 3-pc coupled input, 1750 rpm input speed  
 \*\*Twin Tapered Bushings need to be ordered separately, page RHB-350

NOMENCLATURE PAGE RHB-5	SELECTION GEARMOTOR PAGE RHB-63	DIMENSIONS PAGE RHB-90	THERMAL RATINGS PAGE RHB-364
----------------------------	------------------------------------	---------------------------	---------------------------------

## RHB Footed Housing Non-Stock Part Numbers

### BB Housing - Non-Stock ◆

Ratio	Size	Exact Ratio	Part Number	Output RPM	Output Torque (in-lb)	Output OHL (lbf)	Mechanical Input HP (Max)			
							180TC	210TC	250TC	280TC
6:1	BB 1483	6.43	<b>B14C25S00643</b>	272	10531	9207			45.49	
	BB 1483	6.43	<b>B14C28S00643</b>	272	21448	9207				92.65
	BB 1683	6.61	<b>B16C25S00661</b>	265	10831	13774			45.49	
	BB 1683	6.61	<b>B16C28S00661</b>	265	22060	13774				92.65
7.5:1	BB 1083	7.68	<b>B10C21S00768</b>	228	8348	5586		30.2		
	BB 1083	7.68	<b>B10C25S00768</b>	228	12540	5586			45.36	
	BB 1283	7.10	<b>B12C21S00710</b>	246	8378	6907		32.76		
	BB 1283	7.10	<b>B12C25S00710</b>	246	11635	6907			45.49	
	BB 1283	7.10	<b>B12C28S00710</b>	246	23697	6907				92.65
10:1	BB 1083	10.97	<b>B10C18S01097</b>	160	4094	5586	10.36			
	BB 1083	10.97	<b>B10C21S01097</b>	160	10737	5586		27.18		
	BB 1083	10.97	<b>B10C25S01097</b>	160	12862	5586			32.56	
	BB 1283	10.88	<b>B12C18S01088</b>	161	4061	6907	10.42			
	BB 1283	10.88	<b>B12C21S01088</b>	161	12838	6907		32.94		
	BB 1283	10.88	<b>B12C25S01088</b>	161	17829	6907			45.75	
	BB 1283	10.88	<b>B12C28S01088</b>	161	26345	6907				67.6
	BB 1483	9.77	<b>B14C25S00977</b>	179	16009	10246			45.49	
	BB 1483	9.77	<b>B14C28S00977</b>	179	32606	10246				92.66
	BB 1683	10.17	<b>B16C21S01017</b>	172	12003	15278		32.76		
	BB 1683	10.17	<b>B16C25S01017</b>	172	16668	15278			45.49	
BB 1683	10.17	<b>B16C28S01017</b>	172	33948	15278				92.65	
15:1	BB 1083	16.75	<b>B10C18S01675</b>	104	6253	5586	10.36			
	BB 1083	16.75	<b>B10C21S01675</b>	104	17279	5586		28.64		
	BB 1083	16.75	<b>B10C25S01675</b>	104	22429	5586			37.17	
	BB 1283	15.13	<b>B12C21S01513</b>	116	17845	6907		32.76		
	BB 1283	15.13	<b>B12C25S01513</b>	116	24782	6907			45.49	
	BB 1283	15.13	<b>B12C28S01513</b>	116	36876	6907				67.69
	BB 1483	15.05	<b>B14C21S01505</b>	116	17760	11162		32.76		
	BB 1483	15.05	<b>B14C25S01505</b>	116	24664	11162			45.49	
	BB 1483	15.05	<b>B14C28S01505</b>	116	50233	11162				92.65
	BB 1683	16.21	<b>B16C25S01621</b>	108	26561	16566			45.49	
	BB 1683	16.21	<b>B16C28S01621</b>	108	54096	16566				92.65

◆ - Build to Order

**Notes:** Footed, standard inch shaft diameter, A-side shaft, A1 mounted position, clamp collar input, 1750 RPM input speed

NOMENCLATURE PAGE RHB-5	SELECTION GEARMOTOR PAGE RHB-63	DIMENSIONS PAGE RHB-90	THERMAL RATINGS PAGE RHB-364
----------------------------	------------------------------------	---------------------------	---------------------------------

## RHB Footed Housing Non-Stock Part Numbers BB Housing - Non-Stock ♦ (continued)

Ratio	Size	Exact Ratio	Part Number	Output RPM	Output Torque (in-lb)	Output OHL (lbf)	Mechanical Input HP (Max)			
							180TC	210TC	250TC	280TC
20:1	BB 1083	19.63	<b>B10C18S01963</b>	90	7327	5586	10.51			
	BB 1083	19.63	<b>B10C21S01963</b>	90	19214	5586		27.55		
	BB 1083	19.63	<b>B10C25S01963</b>	90	23527	5586			33.74	
	BB 1283	19.92	<b>B12C18S01992</b>	88	7435	6907	10.36			
	BB 1283	19.92	<b>B12C21S01992</b>	88	23503	6907		32.76		
	BB 1283	19.92	<b>B12C25S01992</b>	88	32639	6907			45.49	
	BB 1283	19.92	<b>B12C28S01992</b>	88	40048	6907				55.82
	BB 1483	19.84	<b>B14C21S01984</b>	88	23411	11951		32.76		
	BB 1483	19.84	<b>B14C25S01984</b>	88	31142	11951			43.58	
	BB 1483	19.84	<b>B14C28S01984</b>	88	62412	11951				87.33
	BB 1683	21.90	<b>B16C21S02190</b>	80	25837	17607		32.76		
BB 1683	21.90	<b>B16C25S02190</b>	80	35880	17607			45.49		
BB 1683	21.90	<b>B16C28S02190</b>	80	72368	17607				91.75	
25:1	BB 1083	26.48	<b>B10C18S02648</b>	66	9882	5586	10.36			
	BB 1083	26.48	<b>B10C21S02648</b>	66	22967	5586		24.08		
	BB 1083	26.48	<b>B10C25S02648</b>	66	24813	5586			26.02	
	BB 1283	27.02	<b>B12C18S02702</b>	65	10083	6907	10.36			
	BB 1283	27.02	<b>B12C21S02702</b>	65	31010	6907		31.87		
	BB 1283	27.02	<b>B12C25S02702</b>	65	39336	6907			40.43	
	BB 1283	27.02	<b>B12C28S02702</b>	65	41016	6907				42.16
	BB 1483	26.58	<b>B14C18S02658</b>	66	9922	11951	10.36			
	BB 1483	26.58	<b>B14C21S02658</b>	66	29258	11951		30.56		
BB 1483	26.58	<b>B14C25S02658</b>	66	36474	11951			38.1		
BB 1483	26.58	<b>B14C28S02658</b>	66	68393	11951				71.44	
30:1	BB 1283	30.61	<b>B12C18S03061</b>	57	11426	6907	10.36			
	BB 1283	30.61	<b>B12C21S03061</b>	57	33693	6907		30.56		
	BB 1283	30.61	<b>B12C25S03061</b>	57	41391	6907			37.54	
	BB 1283	30.61	<b>B12C28S03061</b>	57	41391	6907				37.54
	BB 1483	31.10	<b>B14C25S03110</b>	56	50954	12561			45.49	
	BB 1483	31.10	<b>B14C28S03110</b>	56	70848	12561				63.25
	BB 1683	32.53	<b>B16C21S03253</b>	54	35803	19423		30.56		
	BB 1683	32.53	<b>B16C25S03253</b>	54	44634	19423			38.1	
BB 1683	32.53	<b>B16C28S03253</b>	54	94984	19423				81.07	
35:1	BB 1083	36.44	<b>B10C21S03644</b>	48	25251	5586		19.24		
	BB 1083	36.44	<b>B10C25S03644</b>	48	25251	5586			19.24	
	BB 1283	35.92	<b>B12C18S03592</b>	49	13408	6907	10.36			
	BB 1283	35.92	<b>B12C21S03592</b>	49	37263	6907		28.8		
	BB 1283	35.92	<b>B12C25S03592</b>	49	41623	6907			32.17	
BB 1283	35.92	<b>B12C28S03592</b>	49	41623	6907				32.17	

♦ - Build to Order

**Notes:** Footed, standard inch shaft diameter, A-side shaft, A1 mounted position, clamp collar input, 1750 RPM input speed

NOMENCLATURE PAGE RHB-5	SELECTION GEARMOTOR PAGE RHB-63	DIMENSIONS PAGE RHB-90	THERMAL RATINGS PAGE RHB-364
----------------------------	------------------------------------	---------------------------	---------------------------------

## RHB Finished Goods Part Numbers BB Housing - Non-Stock ♦ (continued)

Ratio	Size	Exact Ratio	Part Number	Output RPM	Output Torque (in-lb)	Output OHL (lbf)	Mechanical Input HP (Max)			
							180TC	210TC	250TC	280TC
40:1	BB 1083	44.44	<b>B10C18S04444</b>	39	16587	5586	10.36			
	BB 1083	44.44	<b>B10C21S04444</b>	39	26568	5586		16.6		
	BB 1083	44.44	<b>B10C25S04444</b>	39	26568	5586			16.6	
	BB 1283	41.38	<b>B12C21S04138</b>	42	41623	6907		27.93		
	BB 1283	41.38	<b>B12C25S04138</b>	42	41623	6907			27.93	
	BB 1283	41.38	<b>B12C28S04138</b>	42	41623	6907				27.93
	BB 1483	41.38	<b>B14C25S04138</b>	42	62775	12561			42.12	
	BB 1483	41.38	<b>B14C28S04138</b>	42	70848	12561				47.54
	BB 1683	45.15	<b>B16C25S04515</b>	39	73970	18949			45.49	
BB 1683	45.15	<b>B16C28S04515</b>	39	119556	18949				73.53	
50:1	BB 1083	52.08	<b>B10C18S05208</b>	34	19436	5586	10.36			
	BB 1083	52.08	<b>B10C21S05208</b>	34	26568	5586		14.17		
	BB 1083	52.08	<b>B10C25S05208</b>	34	26568	5586			14.17	
	BB 1283	48.14	<b>B12C21S04814</b>	36	41623	6907		24.01		
	BB 1283	48.14	<b>B12C25S04814</b>	36	41623	6907			24.01	
	BB 1283	48.14	<b>B12C28S04814</b>	36	41623	6907				24.01
	BB 1283	53.36	<b>B12C21S05336</b>	33	41623	6907		21.66		
	BB 1283	53.36	<b>B12C25S05336</b>	33	41623	6907			21.66	
	BB 1283	53.36	<b>B12C28S05336</b>	33	41623	6907				21.66
	BB 1683	53.18	<b>B16C21S05318</b>	33	62733	18949		32.76		
	BB 1683	53.18	<b>B16C25S05318</b>	33	87120	18949			45.49	
BB 1683	53.18	<b>B16C28S05318</b>	33	119556	18949				62.43	
60:1	BB 1083	61.22	<b>B10C18S06122</b>	29	22847	5586	10.36			
	BB 1083	61.22	<b>B10C21S06122</b>	29	26568	5586		12.05		
	BB 1083	61.22	<b>B10C25S06122</b>	29	26568	5586			12.05	
	BB 1483	56.57	<b>B14C21S05657</b>	31	66736	13027		32.76		
	BB 1483	56.57	<b>B14C25S05657</b>	31	70848	13027			34.78	
	BB 1483	56.57	<b>B14C28S05657</b>	31	70848	13027				34.78
75:1	BB 1083	70.24	<b>B10C18S07024</b>	25	26213	5586	10.36			
	BB 1083	70.24	<b>B10C21S07024</b>	25	26568	5586		10.5		
	BB 1083	70.24	<b>B10C25S07024</b>	25	26568	5586			10.5	
	BB 1483	73.80	<b>B14C18S07380</b>	24	27544	13027	10.36			
	BB 1483	73.80	<b>B14C21S07380</b>	24	70848	13027		26.66		
	BB 1483	73.80	<b>B14C25S07380</b>	24	70848	13027			26.66	
	BB 1483	73.80	<b>B14C28S07380</b>	24	70848	13027				26.66
80:1	BB 1283	85.98	<b>B12C18S08598</b>	20	32091	6907	10.36			
	BB 1283	85.98	<b>B12C21S08598</b>	20	41623	6907		13.44		
	BB 1283	85.98	<b>B12C25S08598</b>	20	41623	6907			13.44	
	BB 1283	85.98	<b>B12C28S08598</b>	20	41623	6907				13.44
	BB 1683	79.49	<b>B16C21S07949</b>	22	91244	18949		31.87		
	BB 1683	79.49	<b>B16C25S07949</b>	22	115740	18949			40.43	
	BB 1683	79.49	<b>B16C28S07949</b>	22	119556	18949				41.76

♦ - Build to Order

**Notes:** Footed, standard inch shaft diameter, A-side shaft, A1 mounted position, clamp collar input, 1750 RPM input speed

NOMENCLATURE PAGE RHB-5	SELECTION GEARMOTOR PAGE RHB-63	DIMENSIONS PAGE RHB-90	THERMAL RATINGS PAGE RHB-364
----------------------------	------------------------------------	---------------------------	---------------------------------

## RHB Finished Goods Part Numbers BB Housing - Non-Stock ♦ (continued)

Ratio	Size	Exact Ratio	Part Number	Output RPM	Output Torque (in-lb)	Output OHL (lbf)	Mechanical Input HP (Max)			
							180TC	210TC	250TC	280TC
90:1	BB 1083	89.85	<b>B10C18S08985</b>	19	26568	5586	8.21			
	BB 1083	89.85	<b>B10C21S08985</b>	19	26568	5586		8.21		
	BB 1083	89.85	<b>B10C25S08985</b>	19	26568	5586			8.21	
	BB 1283	97.44	<b>B12C18S09744</b>	18	36365	6907	10.36			
	BB 1283	97.44	<b>B12C21S09744</b>	18	41623	6907		11.86		
	BB 1283	97.44	<b>B12C25S09744</b>	18	41623	6907			11.86	
100:1	BB 1283	97.44	<b>B12C28S09744</b>	18	41623	6907				11.86
	BB 1083	108.52	<b>B10C18S10852</b>	16	26568	5586	6.8			
	BB 1083	108.52	<b>B10C21S10852</b>	16	26568	5586		6.8		
	BB 1083	108.52	<b>B10C25S10852</b>	16	26568	5586			6.8	
	BB 1483	101.53	<b>B14C18S10153</b>	17	37894	13027	10.36			
	BB 1483	101.53	<b>B14C21S10153</b>	17	70848	13027		19.37		
	BB 1483	101.53	<b>B14C25S10153</b>	17	70848	13027			19.37	
	BB 1483	101.53	<b>B14C28S10153</b>	17	70848	13027				19.37
125:1	BB 1683	104.18	<b>B16C21S10418</b>	17	108058	18949		28.8		
	BB 1683	104.18	<b>B16C25S10418</b>	17	119556	18949			31.87	
	BB 1683	104.18	<b>B16C28S10418</b>	17	119556	18949				31.87
	BB 1083	128.86	<b>B10C18S12886</b>	14	26568	5586	5.72			
	BB 1083	128.86	<b>B10C21S12886</b>	14	26568	5586		5.72		
	BB 1083	128.86	<b>B10C25S12886</b>	14	26568	5586			5.72	
	BB 1283	114.34	<b>B12C18S11434</b>	15	41623	6907	10.11			
	BB 1283	114.34	<b>B12C21S11434</b>	15	41623	6907		10.11		
	BB 1283	114.34	<b>B12C25S11434</b>	15	41623	6907			10.11	
	BB 1283	114.34	<b>B12C28S11434</b>	15	41623	6907				10.11
150:1	BB 1283	136.07	<b>B12C18S13607</b>	13	41623	6907	8.49			
	BB 1283	136.07	<b>B12C21S13607</b>	13	41623	6907		8.49		
	BB 1283	136.07	<b>B12C25S13607</b>	13	41623	6907			8.49	
	BB 1283	136.07	<b>B12C28S13607</b>	13	41623	6907				8.49
	BB 1483	142.41	<b>B14C18S14241</b>	12	51758	13027	10.09			
	BB 1483	142.41	<b>B14C21S14241</b>	12	70848	13027		13.81		
	BB 1483	142.41	<b>B14C25S14241</b>	12	70848	13027			13.81	
175:1	BB 1483	142.41	<b>B14C28S14241</b>	12	70848	13027				13.81
	BB 1683	150.36	<b>B16C21S15036</b>	12	119556	18949		22.08		
	BB 1683	150.36	<b>B16C25S15036</b>	12	119556	18949			22.08	
	BB 1683	150.36	<b>B16C28S15036</b>	12	119556	18949				22.08
	BB 1083	163.51	<b>B10C18S16351</b>	11	26568	5586	4.51			
	BB 1083	163.51	<b>B10C21S16351</b>	11	26568	5586		4.51		
175:1	BB 1283	175.80	<b>B12C18S17580</b>	10	41623	6907	6.57			
	BB 1283	175.80	<b>B12C21S17580</b>	10	41623	6907		6.57		
	BB 1283	175.80	<b>B12C25S17580</b>	10	41623	6907			6.57	
	BB 1283	175.80	<b>B12C28S17580</b>	10	41623	6907				6.57

♦ - Build to Order

**Notes:** Footed, standard inch shaft diameter, A-side shaft, A1 mounted position, clamp collar input, 1750 RPM input speed

NOMENCLATURE PAGE RHB-5	SELECTION GEARMOTOR PAGE RHB-63	DIMENSIONS PAGE RHB-90	THERMAL RATINGS PAGE RHB-364
----------------------------	------------------------------------	---------------------------	---------------------------------

## RHB Finished Goods Part Numbers BB Housing - Non-Stock ♦ (continued)

Ratio	Size	Exact Ratio	Part Number	Output RPM	Output Torque (in-lb)	Output OHL (lbf)	Mechanical Input HP (Max)			
							180TC	210TC	250TC	280TC
200:1	BB 1083	201.11	<b>B10C18S20111</b>	9	41623	5586	3.67			
	BB 1283	204.18	<b>B12C18S20418</b>	9	41623	6907	5.66			
	BB 1283	204.18	<b>B12C21S20418</b>	9	41623	6907		5.66		
	BB 1483	204.38	<b>B14C18S20438</b>	9	62906	13027	8.55			
	BB 1483	204.38	<b>B14C21S20438</b>	9	70848	13027		9.63		
	BB 1483	204.38	<b>B14C25S20438</b>	9	70848	13027			9.63	
	BB 1683	199.54	<b>B16C21S19954</b>	9	119556	18949		16.64		
BB 1683	199.54	<b>B16C25S19954</b>	9	119556	18949			16.64		
250:1	BB 1083	243.47	<b>B10C18S24347</b>	7	26553	5586	3.03			
	BB 1283	242.02	<b>B12C18S24202</b>	7	41623	6907	4.78			
	BB 1283	242.02	<b>B12C21S24202</b>	7	41623	6907		4.78		
	BB 1483	251.55	<b>B14C18S25155</b>	7	64739	13027	7.13			
	BB 1483	251.55	<b>B14C21S25155</b>	7	70848	13027		7.81		
	BB 1683	226.15	<b>B16C21S22615</b>	8	119556	18949		14.68		
300:1	BB 1283	295.38	<b>B12C18S29538</b>	6	41623	6907	3.91			
	BB 1483	306.08	<b>B14C18S30608</b>	6	66221	13027	6.01			
	BB 1683	287.95	<b>B16C21S28795</b>	6	104886	18949		10.11		

♦ - Build to Order

**Notes:** Footed, standard inch shaft diameter, A-side shaft, A1 mounted position, clamp collar input, 1750 RPM input speed

NOMENCLATURE PAGE RHB-5	SELECTION GEARMOTOR PAGE RHB-63	DIMENSIONS PAGE RHB-90	THERMAL RATINGS PAGE RHB-364
----------------------------	------------------------------------	---------------------------	---------------------------------



## RHB Flanged Housing Non-Stock Part Numbers

### BF Housing - Non-Stock ◆

Ratio	Size	Exact Ratio	Part Number	Output RPM	Output Torque (in-lb)	Output OHL (lbf)	Mechanical Input HP (Max)			
							180TC	210TC	250TC	280TC
6:1	BF 1483	6.43	<b>BF14C25T00643</b>	272	10531	9207			45.49	
	BF 1483	6.43	<b>BF14C28T00643</b>	272	21448	9207				92.65
	BF 1683	6.61	<b>BF16C25T00661</b>	265	10831	13774			45.49	
	BF 1683	6.61	<b>BF16C28T00661</b>	265	22060	13774				92.65
7.5:1	BF 1083	7.68	<b>BF10C21T00768</b>	228	8348	5586		30.2		
	BF 1083	7.68	<b>BF10C25T00768</b>	228	12540	5586			45.36	
	BF 1283	7.10	<b>BF12C21T00710</b>	246	8378	6907		32.76		
	BF 1283	7.10	<b>BF12C25T00710</b>	246	11635	6907			45.49	
	BF 1283	7.10	<b>BF12C28T00710</b>	246	23697	6907				92.65
10:1	BF 1083	10.97	<b>BF10C18T01097</b>	160	4094	5586	10.36			
	BF 1083	10.97	<b>BF10C21T01097</b>	160	10737	5586		27.18		
	BF 1083	10.97	<b>BF10C25T01097</b>	160	12862	5586			32.56	
	BF 1283	10.88	<b>BF12C18T01088</b>	161	4061	6907	10.42			
	BF 1283	10.88	<b>BF12C21T01088</b>	161	12838	6907		32.94		
	BF 1283	10.88	<b>BF12C25T01088</b>	161	17829	6907			45.75	
	BF 1283	10.88	<b>BF12C28T01088</b>	161	26345	6907				67.6
	BF 1483	9.77	<b>BF14C25T00977</b>	179	16009	10246			45.49	
	BF 1483	9.77	<b>BF14C28T00977</b>	179	32606	10246				92.66
	BF 1683	10.17	<b>BF16C21T01017</b>	172	12003	15278		32.76		
BF 1683	10.17	<b>BF16C25T01017</b>	172	16668	15278			45.49		
BF 1683	10.17	<b>BF16C28T01017</b>	172	33948	15278				92.65	
15:1	BF 1083	16.75	<b>BF10C18T01675</b>	104	6253	5586	10.36			
	BF 1083	16.75	<b>BF10C21T01675</b>	104	17279	5586		28.64		
	BF 1083	16.75	<b>BF10C25T01675</b>	104	22429	5586			37.17	
	BF 1283	15.13	<b>BF12C21T01513</b>	116	17845	6907		32.76		
	BF 1283	15.13	<b>BF12C25T01513</b>	116	24782	6907			45.49	
	BF 1283	15.13	<b>BF12C28T01513</b>	116	36876	6907				67.69
	BF 1483	15.05	<b>BF14C21T01505</b>	116	17760	11162		32.76		
	BF 1483	15.05	<b>BF14C25T01505</b>	116	24664	11162			45.49	
	BF 1483	15.05	<b>BF14C28T01505</b>	116	50233	11162				92.65
	BF 1683	16.21	<b>BF16C25T01621</b>	108	26561	16566			45.49	
BF 1683	16.21	<b>BF16C28T01621</b>	108	54096	16566				92.65	

◆ - Build to Order

**Notes:** Twin Tapered Hollow Output Bore, A1 Mounting Position, Clamp Collar Input, 1750 RPM Input Speed

Twin Tapered Bushings Need To Be Ordered Separately

NOMENCLATURE PAGE RHB-5	SELECTION GEARMOTOR PAGE RHB-63	DIMENSIONS PAGE RHB-90	THERMAL RATINGS PAGE RHB-364
----------------------------	------------------------------------	---------------------------	---------------------------------

## RHB Flanged Housing Non-Stock Part Numbers BF Housing - Non-Stock ♦ (continued)

Ratio	Size	Exact Ratio	Part Number	Output RPM	Output Torque (in-lb)	Output OHL (lbf)	Mechanical Input HP (Max)			
							180TC	210TC	250TC	280TC
20:1	BF 1083	19.63	<b>BF10C18T01963</b>	90	7327	5586	10.51			
	BF 1083	19.63	<b>BF10C21T01963</b>	90	19214	5586		27.55		
	BF 1083	19.63	<b>BF10C25T01963</b>	90	23527	5586			33.74	
	BF 1283	19.92	<b>BF12C18T01992</b>	88	7435	6907	10.36			
	BF 1283	19.92	<b>BF12C21T01992</b>	88	23503	6907		32.76		
	BF 1283	19.92	<b>BF12C25T01992</b>	88	32639	6907			45.49	
	BF 1283	19.92	<b>BF12C28T01992</b>	88	40048	6907				55.82
	BF 1483	19.84	<b>BF14C21T01984</b>	88	23411	11951		32.76		
	BF 1483	19.84	<b>BF14C25T01984</b>	88	31142	11951			43.58	
	BF 1483	19.84	<b>BF14C28T01984</b>	88	62412	11951				87.33
	BF 1683	21.90	<b>BF16C21T02190</b>	80	25837	17607		32.76		
	BF 1683	21.90	<b>BF16C25T02190</b>	80	35880	17607			45.49	
BF 1683	21.90	<b>BF16C28T02190</b>	80	72368	17607				91.75	
25:1	BF 1083	26.48	<b>BF10C18T02648</b>	66	9882	5586	10.36			
	BF 1083	26.48	<b>BF10C21T02648</b>	66	22967	5586		24.08		
	BF 1083	26.48	<b>BF10C25T02648</b>	66	24813	5586			26.02	
	BF 1283	27.02	<b>BF12C18T02702</b>	65	10083	6907	10.36			
	BF 1283	27.02	<b>BF12C21T02702</b>	65	31010	6907		31.87		
	BF 1283	27.02	<b>BF12C25T02702</b>	65	39336	6907			40.43	
	BF 1283	27.02	<b>BF12C28T02702</b>	65	41016	6907				42.16
	BF 1483	26.58	<b>BF14C18T02658</b>	66	9922	11951	10.36			
	BF 1483	26.58	<b>BF14C21T02658</b>	66	29258	11951		30.56		
	BF 1483	26.58	<b>BF14C25T02658</b>	66	36474	11951			38.1	
	BF 1483	26.58	<b>BF14C28T02658</b>	66	68393	11951				71.44
	30:1	BF 1283	30.61	<b>BF12C18T03061</b>	57	11426	6907	10.36		
BF 1283		30.61	<b>BF12C21T03061</b>	57	33693	6907		30.56		
BF 1283		30.61	<b>BF12C25T03061</b>	57	41391	6907			37.54	
BF 1283		30.61	<b>BF12C28T03061</b>	57	41391	6907				37.54
BF 1483		31.10	<b>BF14C25T03110</b>	56	50954	12561			45.49	
BF 1483		31.10	<b>BF14C28T03110</b>	56	70848	12561				63.25
BF 1683		32.53	<b>BF16C21T03253</b>	54	35803	19423		30.56		
BF 1683		32.53	<b>BF16C25T03253</b>	54	44634	19423			38.1	
BF 1683	32.53	<b>BF16C28T03253</b>	54	94984	19423				81.07	
35:1	BF 1083	36.44	<b>BF10C21T03644</b>	48	25251	5586		19.24		
	BF 1083	36.44	<b>BF10C25T03644</b>	48	25251	5586			19.24	
	BF 1283	35.92	<b>BF12C18T03592</b>	49	13408	6907	10.36			
	BF 1283	35.92	<b>BF12C21T03592</b>	49	37263	6907		28.8		
	BF 1283	35.92	<b>BF12C25T03592</b>	49	41623	6907			32.17	
	BF 1283	35.92	<b>BF12C28T03592</b>	49	41623	6907				32.17

♦ - Build to Order

**Notes:** Twin Tapered Hollow Output Bore, A1 Mounting Position, Clamp Collar Input, 1750 RPM Input Speed  
Twin Tapered Bushings Need To Be Ordered Separately

NOMENCLATURE PAGE RHB-5	SELECTION GEARMOTOR PAGE RHB-63	DIMENSIONS PAGE RHB-90	THERMAL RATINGS PAGE RHB-364
----------------------------	------------------------------------	---------------------------	---------------------------------

## RHB Flanged Housing Non-Stock Part Numbers BF Housing - Non-Stock ♦ (continued)

Ratio	Size	Exact Ratio	Part Number	Output RPM	Output Torque (in-lb)	Output OHL (lbf)	Mechanical Input HP (Max)			
							180TC	210TC	250TC	280TC
40:1	BF 1083	44.44	<b>BF10C18T04444</b>	39	16587	5586	10.36			
	BF 1083	44.44	<b>BF10C21T04444</b>	39	26568	5586		16.6		
	BF 1083	44.44	<b>BF10C25T04444</b>	39	26568	5586			16.6	
	BF 1283	41.38	<b>BF12C21T04138</b>	42	41623	6907		27.93		
	BF 1283	41.38	<b>BF12C25T04138</b>	42	41623	6907			27.93	
	BF 1283	41.38	<b>BF12C28T04138</b>	42	41623	6907				27.93
	BF 1483	41.38	<b>BF14C25T04138</b>	42	62775	12561			42.12	
	BF 1483	41.38	<b>BF14C28T04138</b>	42	70848	12561				47.54
50:1	BF 1683	45.15	<b>BF16C25T04515</b>	39	73970	18949			45.49	
	BF 1683	45.15	<b>BF16C28T04515</b>	39	119556	18949				73.53
	BF 1083	52.08	<b>BF10C18T05208</b>	34	19436	5586	10.36			
	BF 1083	52.08	<b>BF10C21T05208</b>	34	26568	5586		14.17		
	BF 1083	52.08	<b>BF10C25T05208</b>	34	26568	5586			14.17	
	BF 1283	48.14	<b>BF12C21T04814</b>	36	41623	6907		24.01		
	BF 1283	48.14	<b>BF12C25T04814</b>	36	41623	6907			24.01	
	BF 1283	48.14	<b>BF12C28T04814</b>	36	41623	6907				24.01
60:1	BF 1283	53.36	<b>BF12C21T05336</b>	33	41623	6907		21.66		
	BF 1283	53.36	<b>BF12C25T05336</b>	33	41623	6907			21.66	
	BF 1283	53.36	<b>BF12C28T05336</b>	33	41623	6907				21.66
	BF 1683	53.18	<b>BF16C21T05318</b>	33	62733	18949		32.76		
	BF 1683	53.18	<b>BF16C25T05318</b>	33	87120	18949			45.49	
	BF 1683	53.18	<b>BF16C28T05318</b>	33	119556	18949				62.43
	BF 1083	61.22	<b>BF10C18T06122</b>	29	22847	5586	10.36			
	BF 1083	61.22	<b>BF10C21T06122</b>	29	26568	5586		12.05		
75:1	BF 1083	61.22	<b>BF10C25T06122</b>	29	26568	5586			12.05	
	BF 1483	56.57	<b>BF14C21T05657</b>	31	66736	13027		32.76		
	BF 1483	56.57	<b>BF14C25T05657</b>	31	70848	13027			34.78	
	BF 1483	56.57	<b>BF14C28T05657</b>	31	70848	13027				34.78
	BF 1083	70.24	<b>BF10C18T07024</b>	25	26213	5586	10.36			
80:1	BF 1083	70.24	<b>BF10C21T07024</b>	25	26568	5586		10.5		
	BF 1083	70.24	<b>BF10C25T07024</b>	25	26568	5586			10.5	
	BF 1483	73.80	<b>BF14C18T07380</b>	24	27544	13027	10.36			
	BF 1483	73.80	<b>BF14C21T07380</b>	24	70848	13027		26.66		
	BF 1483	73.80	<b>BF14C25T07380</b>	24	70848	13027			26.66	
	BF 1483	73.80	<b>BF14C28T07380</b>	24	70848	13027				26.66
80:1	BF 1283	85.98	<b>BF12C18T08598</b>	20	32091	6907	10.36			
	BF 1283	85.98	<b>BF12C21T08598</b>	20	41623	6907		13.44		
	BF 1283	85.98	<b>BF12C25T08598</b>	20	41623	6907			13.44	
	BF 1283	85.98	<b>BF12C28T08598</b>	20	41623	6907				13.44
	BF 1683	79.49	<b>BF16C21T07949</b>	22	91244	18949		31.87		
	BF 1683	79.49	<b>BF16C25T07949</b>	22	115740	18949			40.43	
	BF 1683	79.49	<b>BF16C28T07949</b>	22	119556	18949				41.76

♦ - Build to Order

**Notes:** Twin Tapered Hollow Output Bore, A1 Mounting Position, Clamp Collar Input, 1750 RPM Input Speed

Twin Tapered Bushings Need To Be Ordered Separately

NOMENCLATURE PAGE RHB-5	SELECTION GEARMOTOR PAGE RHB-63	DIMENSIONS PAGE RHB-90	THERMAL RATINGS PAGE RHB-364
----------------------------	------------------------------------	---------------------------	---------------------------------

## RHB Flanged Housing Non-Stock Part Numbers BF Housing - Non-Stock ♦ (continued)

Ratio	Size	Exact Ratio	Part Number	Output RPM	Output Torque (in-lb)	Output OHL (lbf)	Mechanical Input HP (Max)			
							180TC	210TC	250TC	280TC
90:1	BF 1083	89.85	<b>BF10C18T08985</b>	19	26568	5586	8.21			
	BF 1083	89.85	<b>BF10C21T08985</b>	19	26568	5586		8.21		
	BF 1083	89.85	<b>BF10C25T08985</b>	19	26568	5586			8.21	
	BF 1283	97.44	<b>BF12C18T09744</b>	18	36365	6907	10.36			
	BF 1283	97.44	<b>BF12C21T09744</b>	18	41623	6907		11.86		
	BF 1283	97.44	<b>BF12C25T09744</b>	18	41623	6907			11.86	
100:1	BF 1283	97.44	<b>BF12C28T09744</b>	18	41623	6907				11.86
	BF 1083	108.52	<b>BF10C18T10852</b>	16	26568	5586	6.8			
	BF 1083	108.52	<b>BF10C21T10852</b>	16	26568	5586		6.8		
	BF 1083	108.52	<b>BF10C25T10852</b>	16	26568	5586			6.8	
	BF 1483	101.53	<b>BF14C18T10153</b>	17	37894	13027	10.36			
	BF 1483	101.53	<b>BF14C21T10153</b>	17	70848	13027		19.37		
	BF 1483	101.53	<b>BF14C25T10153</b>	17	70848	13027			19.37	
	BF 1483	101.53	<b>BF14C28T10153</b>	17	70848	13027				19.37
	BF 1683	104.18	<b>BF16C21T10418</b>	17	108058	18949		28.8		
125:1	BF 1683	104.18	<b>BF16C25T10418</b>	17	119556	18949			31.87	
	BF 1683	104.18	<b>BF16C28T10418</b>	17	119556	18949				31.87
	BF 1083	128.86	<b>BF10C18T12886</b>	14	26568	5586	5.72			
	BF 1083	128.86	<b>BF10C21T12886</b>	14	26568	5586		5.72		
	BF 1083	128.86	<b>BF10C25T12886</b>	14	26568	5586			5.72	
	BF 1283	114.34	<b>BF12C18T11434</b>	15	41623	6907	10.11			
	BF 1283	114.34	<b>BF12C21T11434</b>	15	41623	6907		10.11		
	BF 1283	114.34	<b>BF12C25T11434</b>	15	41623	6907			10.11	
	BF 1283	114.34	<b>BF12C28T11434</b>	15	41623	6907				10.11
150:1	BF 1283	136.07	<b>BF12C18T13607</b>	13	41623	6907	8.49			
	BF 1283	136.07	<b>BF12C21T13607</b>	13	41623	6907		8.49		
	BF 1283	136.07	<b>BF12C25T13607</b>	13	41623	6907			8.49	
	BF 1283	136.07	<b>BF12C28T13607</b>	13	41623	6907				8.49
	BF 1483	142.41	<b>BF14C18T14241</b>	12	51758	13027	10.09			
	BF 1483	142.41	<b>BF14C21T14241</b>	12	70848	13027		13.81		
	BF 1483	142.41	<b>BF14C25T14241</b>	12	70848	13027			13.81	
175:1	BF 1483	142.41	<b>BF14C28T14241</b>	12	70848	13027				13.81
	BF 1683	150.36	<b>BF16C21T15036</b>	12	119556	18949		22.08		
	BF 1683	150.36	<b>BF16C25T15036</b>	12	119556	18949			22.08	
	BF 1683	150.36	<b>BF16C28T15036</b>	12	119556	18949				22.08
	BF 1083	163.51	<b>BF10C18T16351</b>	11	26568	5586	4.51			
175:1	BF 1083	163.51	<b>BF10C21T16351</b>	11	26568	5586		4.51		
	BF 1283	175.80	<b>BF12C18T17580</b>	10	41623	6907	6.57			
	BF 1283	175.80	<b>BF12C21T17580</b>	10	41623	6907		6.57		
	BF 1283	175.80	<b>BF12C25T17580</b>	10	41623	6907			6.57	
	BF 1283	175.80	<b>BF12C28T17580</b>	10	41623	6907				6.57

♦ - Build to Order

**Notes:** Twin Tapered Hollow Output Bore, A1 Mounting Position, Clamp Collar Input, 1750 RPM Input Speed

Twin Tapered Bushings Need To Be Ordered Separately

NOMENCLATURE PAGE RHB-5	SELECTION GEARMOTOR PAGE RHB-63	DIMENSIONS PAGE RHB-90	THERMAL RATINGS PAGE RHB-364
----------------------------	------------------------------------	---------------------------	---------------------------------

# QUANTIS PART NUMBERS



QUANTIS

QUANTIS GOLD

ILH

RHB

MSM

## RHB Flanged Housing Non-Stock Part Numbers

### BF Housing - Non-Stock ♦ (continued)

Ratio	Size	Exact Ratio	Part Number	Output RPM	Output Torque (in-lb)	Output OHL (lbf)	Mechanical Input HP (Max)			
							180TC	210TC	250TC	280TC
200:1	BF 1083	201.11	<b>BF10C18T20111</b>	9	41623	5586	3.67			
	BF 1283	204.18	<b>BF12C18T20418</b>	9	41623	6907	5.66			
	BF 1283	204.18	<b>BF12C21T20418</b>	9	41623	6907		5.66		
	BF 1483	204.38	<b>BF14C18T20438</b>	9	62906	13027	8.55			
	BF 1483	204.38	<b>BF14C21T20438</b>	9	70848	13027		9.63		
	BF 1483	204.38	<b>BF14C25T20438</b>	9	70848	13027			9.63	
	BF 1683	199.54	<b>BF16C21T19954</b>	9	119556	18949		16.64		
	BF 1683	199.54	<b>BF16C25T19954</b>	9	119556	18949			16.64	
250:1	BF 1083	243.47	<b>BF10C18T24347</b>	7	26553	5586	3.03			
	BF 1283	242.02	<b>BF12C18T24202</b>	7	41623	6907	4.78			
	BF 1283	242.02	<b>BF12C21T24202</b>	7	41623	6907		4.78		
	BF 1483	251.55	<b>BF14C18T25155</b>	7	64739	13027	7.13			
	BF 1483	251.55	<b>BF14C21T25155</b>	7	70848	13027		7.81		
	BF 1683	226.15	<b>BF16C21T22615</b>	8	119556	18949		14.68		
300:1	BF 1283	295.38	<b>BF12C18T29538</b>	6	41623	6907	3.91			
	BF 1483	306.08	<b>BF14C18T30608</b>	6	66221	13027	6.01			
	BF 1683	287.95	<b>BF16C21T28795</b>	6	104886	18949		10.11		

♦ - Build to Order

**Notes:** Twin Tapered Hollow Output Bore, A1 Mounting Position, Clamp Collar Input, 1750 RPM Input Speed

Twin Tapered Bushings Need To Be Ordered Separately

NOMENCLATURE PAGE RHB-5	SELECTION GEARMOTOR PAGE RHB-63	DIMENSIONS PAGE RHB-90	THERMAL RATINGS PAGE RHB-364
----------------------------	------------------------------------	---------------------------	---------------------------------